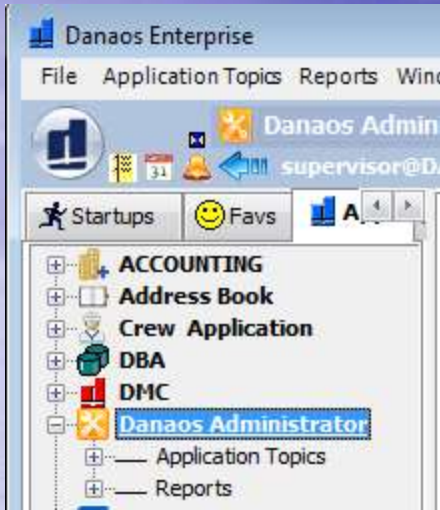


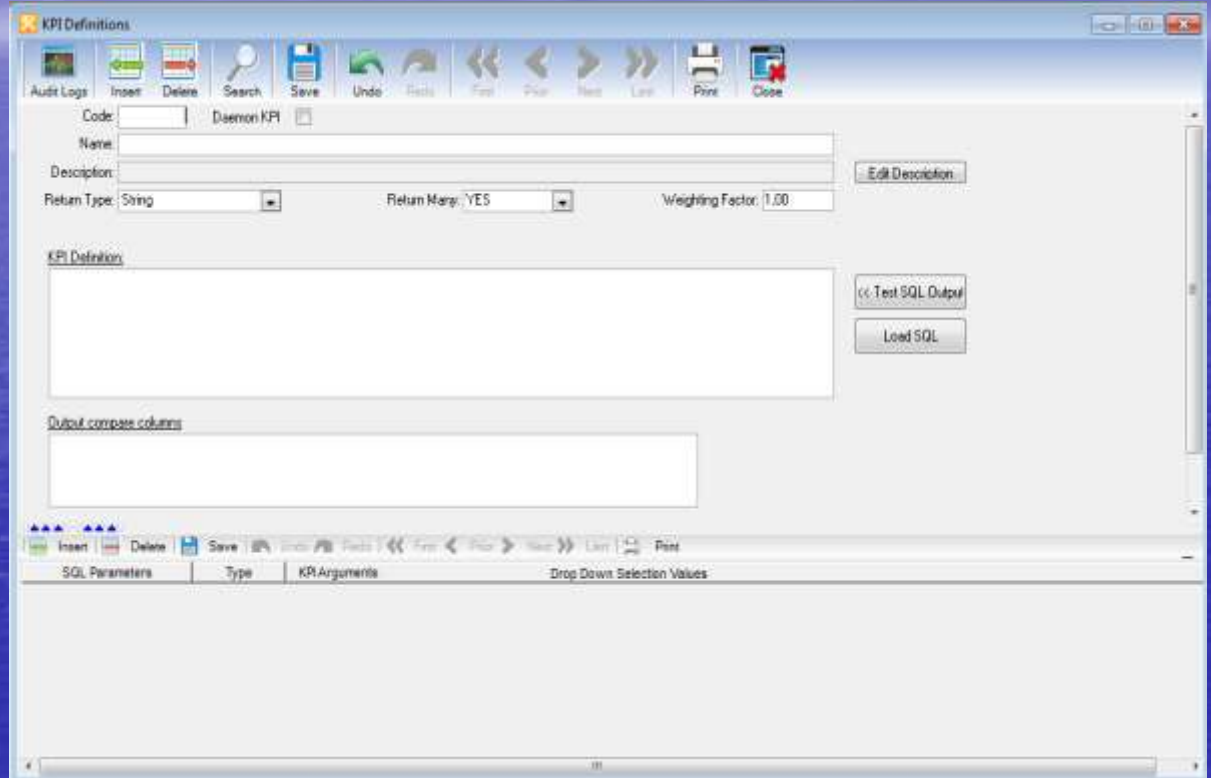
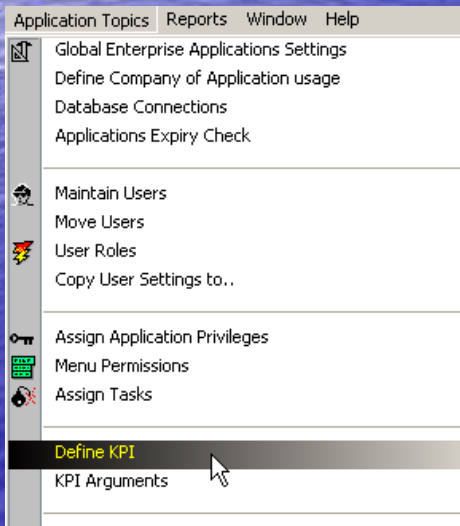
KPI

- Define KPI
- Define KPI/Test SQL
- Maintain KPI Folder
- Maintain KPI Rule
- Run Selected KPI Rule
- Create DAEMON KPI
- Corporate KPI Performance Report

1) Select **Danaos Administrator** Application



2) Select **Define KPI** submenu from Application Topics Menu



In this Example we will create an SQL which will retrieve ROB for all critical spare parts less than MIN QTY .

Code: 206 Daemon KPI

Name: CRITICAL SPARE PART_ROB LESS THAN MIN QTY

Description:

Return Type: Number Return Many: NO Weighting Factor:

KPI Definition:

```
SELECT COUNT(*)
FROM
  "VESSEL_INVENTORY" "A",
  "ITEM"
WHERE
  ("A"."SYSTEM_CODE" = "ITEM"."SYSTEM_CODE") AND
  ("A"."SUBSYSTEM_CODE" = "ITEM"."SUBSYSTEM_CODE") AND
  ("A"."ITEM_REF_CODE" = "ITEM"."REF") AND
```

Output compare columns

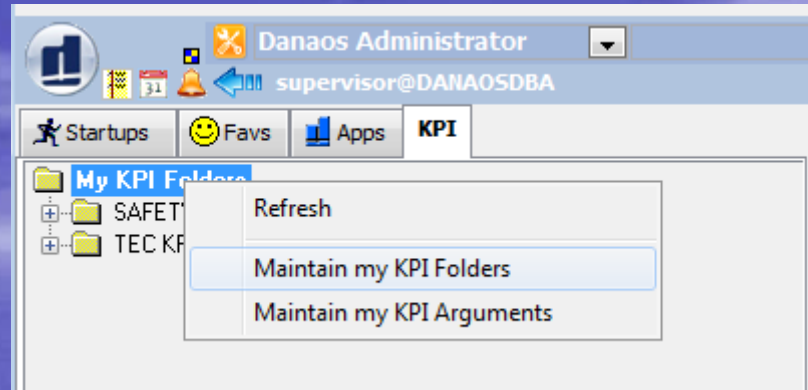
Buttons: Edit Description, << Test SQL Output, Load SQL

1) Press **Load SQL** button and then **Test SQL Output** button in order to execute-check the SQL

Count(*)
269

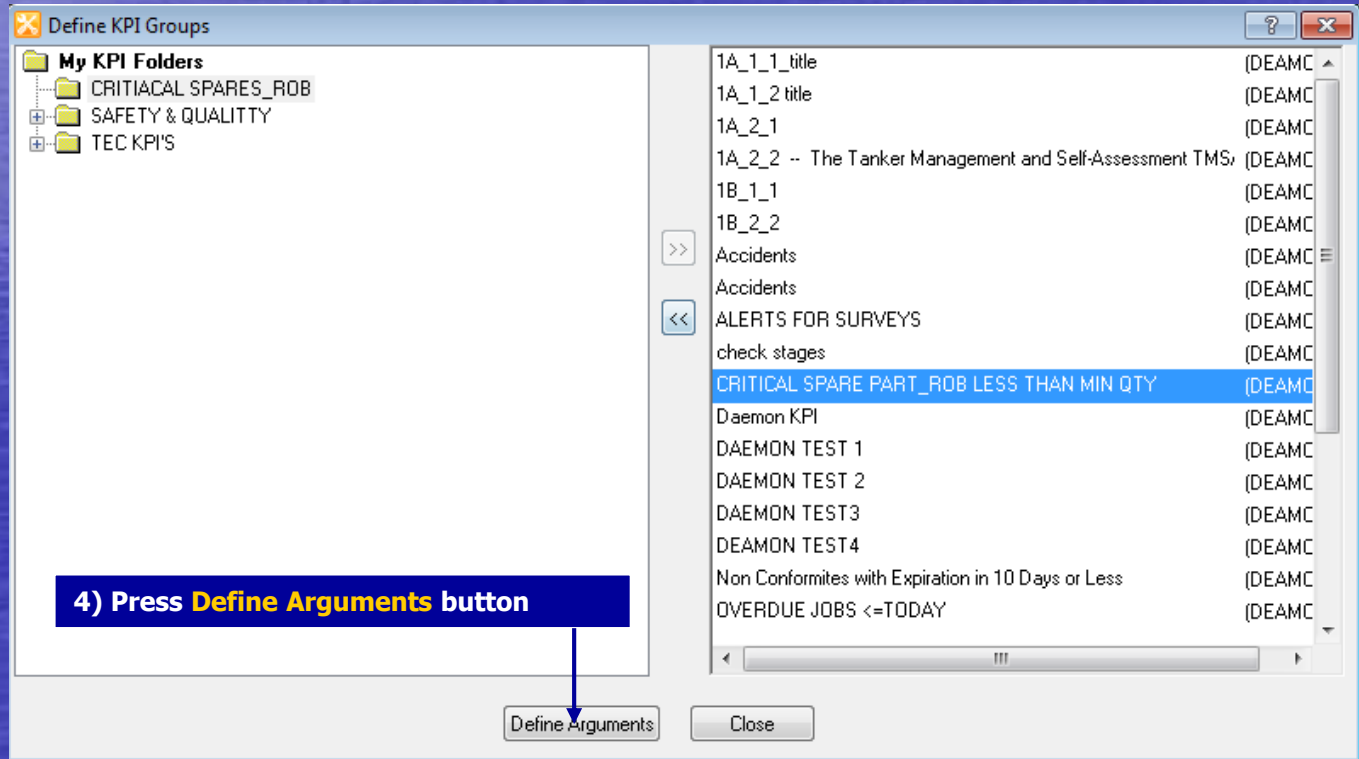
Close

1) Open KPI section, right click on **My KPI Folders** folder and select **Maintain my KPI Folders**



2) Right click on **My KPI Folders** folder and create a new folder(**Danaos_Kpi**)

3) Select from the SQL list the created SQL(**vessel age**) and press the **left arrow** button to move it into the folder



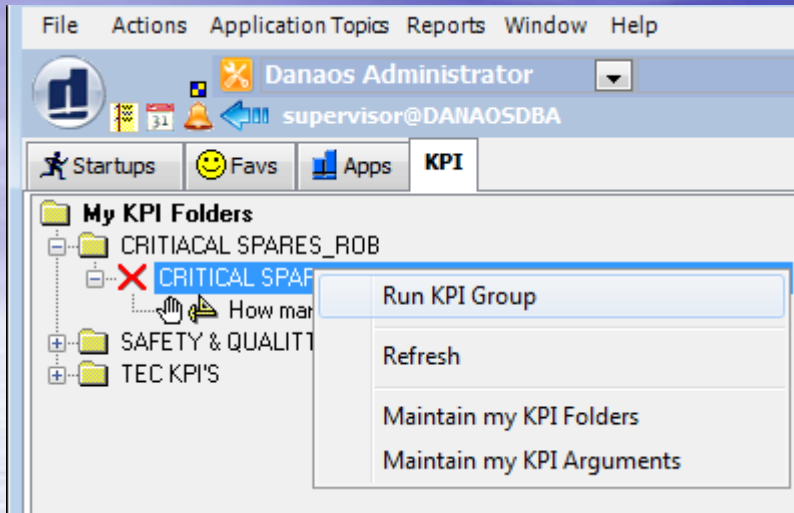
1) Select Created KPI (Vessel Age) and press **Add Rule** button

The screenshot shows a software window titled "Define my KPI Arguments". On the left is a tree view under "My KPI Folders" containing "CRITIACAL SPARES_ROB", "CRITICAL SPARE PART_ROB LESS THAN MIN QTY (DAEMON)", "SAFETY & QUALITTY", and "TEC KPI'S". The "CRITICAL SPARE PART_ROB LESS THAN MIN QTY (DAEMON)" folder is selected and has a red 'X' icon. On the right is a configuration area for a rule. A blue callout box with white text says: "In this example we wish Administrator role to receive the specified Alert in case that the Output of KPI is > 0". Below this are buttons for "Add Scenario Arguments", "Add Rule", and "Maintain my Scenarios". The "Add Rule" button is active. The rule configuration includes: "Rule Name: How many ROB qties for Critical Spares is less than Min Qty"; "IF Output of KPI is" with a dropdown set to ">" and a value of "0"; a "Test" button; "When Equation is TRUE" section with "Notify Role" set to "ADMIN ROLE", "Myself" checked, and a "Test Alert" button; "Application" set to "Supply Application"; and "Go to menu option" set to "Items Min-Max Report". Below this is an "Alert Message" field containing "%OUTPUT% critical spares_ROB less than MIN QTY" and a "Delete" button. At the bottom left, another blue callout box with white text says: "2) Enter the proper condition-rule in order to receive the valid Alert Message (specified by you)", with an arrow pointing to the "Alert Message" field. The bottom of the window shows "Rule 1 of 1".

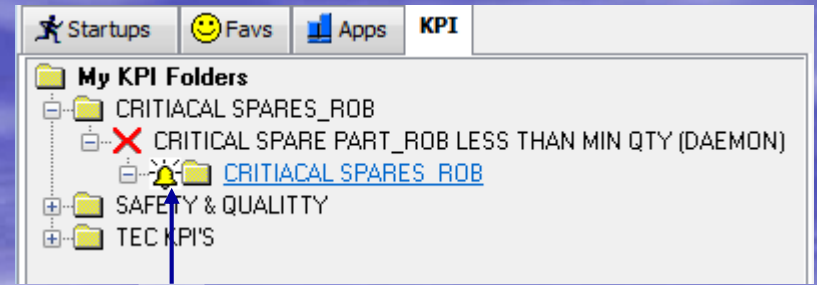
In this example we wish Administrator role to receive the specified Alert in case that the **Output of KPI is > 0**

2) Enter the proper **condition-rule** in order to receive the valid **Alert Message** (specified by you)

1) Right click on KPI Rule and select **Run KPI Group**

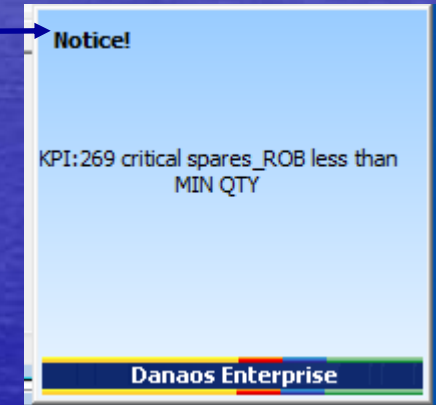


2) Enter all relevant fields and press **Run Report** Button



4

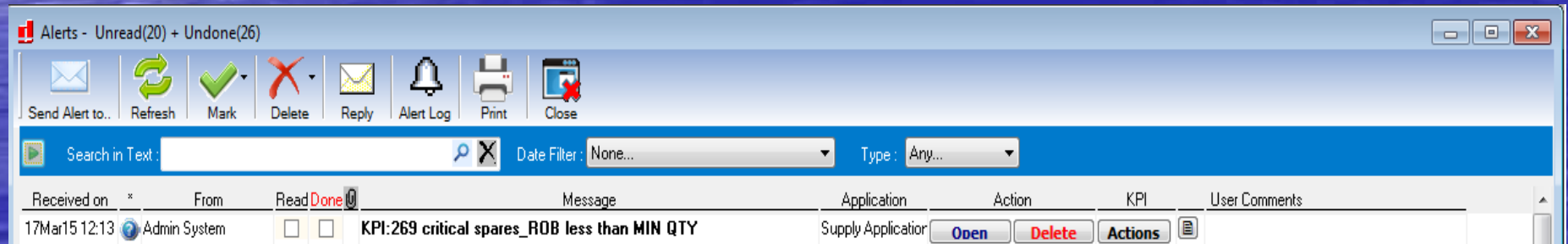
3



3) View Created Alert

4) Press Open Button to access pre-defined menu option(or double click on bell icon)

5) Press Action Button to add Comment/Action



5

In this example we wish the user to be able to define the date

KPI Definitions

Code: 2221 Daemon KPI

Name: Vessel Age1

Return Type: Number

Return Many: NO

KPI SQL:

```
select count(1) from vessel_data where year_build > <given date>
```

OUTPUT COMPARE COLUMNS:

Insert Delete Save Undo Redo First Prior Next Last Print

SQL Parameters	Type	KPI Arguments
given date	Number	<input checked="" type="checkbox"/> Get Retrieval Argument from user

- 1) Replace "1995" in KPI SQL field with "<given date>" (user defined description)
- 2) Press Insert button, enter in SQL Parameters field previous defined description (i.e. given date)
- 3) Press Test SQL Output button and enter preferred year

Specify Retrieval Arguments

given year = 1995

OK Cancel

4) Continue exactly same way as previous example

SQL Output

Count(1)
3

In this example we create a DAEMON KPI which will retrieve the number of all accidents that happened after 02/06/2002 (Only System Administrator can create a DAEMON KPI)

1) Click on the DAEMON KPI tickbox

2) Define the Interval (in this example the created KPI rule will run every 1 hour)

The screenshot shows the 'KPI Definitions' window. At the top, there are two blue boxes labeled '1' and '2'. Box '1' has an arrow pointing to the 'Daemon KPI' checkbox, which is checked. Box '2' has an arrow pointing to the 'Run after' field, which contains the value '1' and is followed by 'Hours'. Below these fields, the 'Name' is 'Accidents', 'Return Type' is 'Number', and 'Return Many' is 'NO'. The 'KPI SQL' field contains the following query:

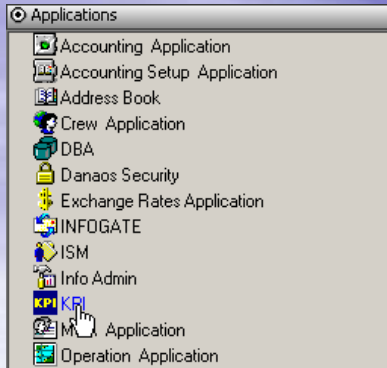
```
SELECT COUNT(1)
FROM ACCIDENTS
WHERE OCCURED_ON > TO_DATE('2-06-2002 00:30:00','DD-MM-YYYY HH24:MI:SS')
```

 To the right of the SQL field are buttons for '<< Test SQL Output' and 'Load SQL'. Below the SQL field is an 'OUTPUT COMPARE COLUMNS' section with an empty text area. At the bottom of the window is a toolbar with icons for Insert, Delete, Save, Undo, Redo, First, Prior, Next, Last, and Print. Below the toolbar are tabs for 'SQL Parameters', 'Type', and 'KPI Arguments'.

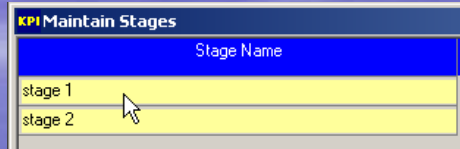
3) Create KPI rule same as previous



1) Select KPI Application



2) Select Maintain Stages from Application Topics Menu



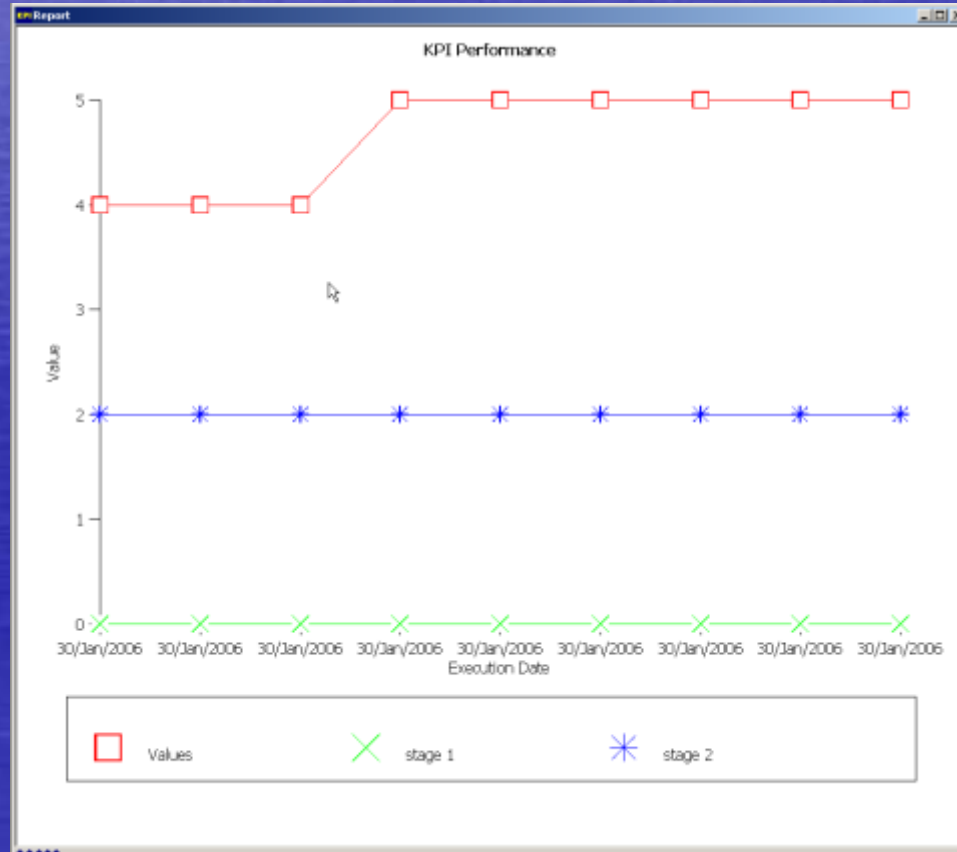
3) Select Maintain KPI Stage Range from Application Topics Menu



A screenshot of the 'KPI Maintain KPI Stage Ranges' dialog box. It has a table with four columns: 'Kpi', 'Stage', 'From', and 'To'. The table contains two rows: 'Accidents' for 'stage 1' with 'From' 0 and 'To' 2.00, and 'Accidents' for 'stage 2' with 'From' 2.00 and 'To' 5.00. A mouse cursor is pointing at the 'Stage' column.

Kpi	Stage	Range	
		From	To
Accidents	stage 1	0	2.00
Accidents	stage 2	2.00	5.00

4) Select Corporate KPI Performance from Reports Menu





[back](#)